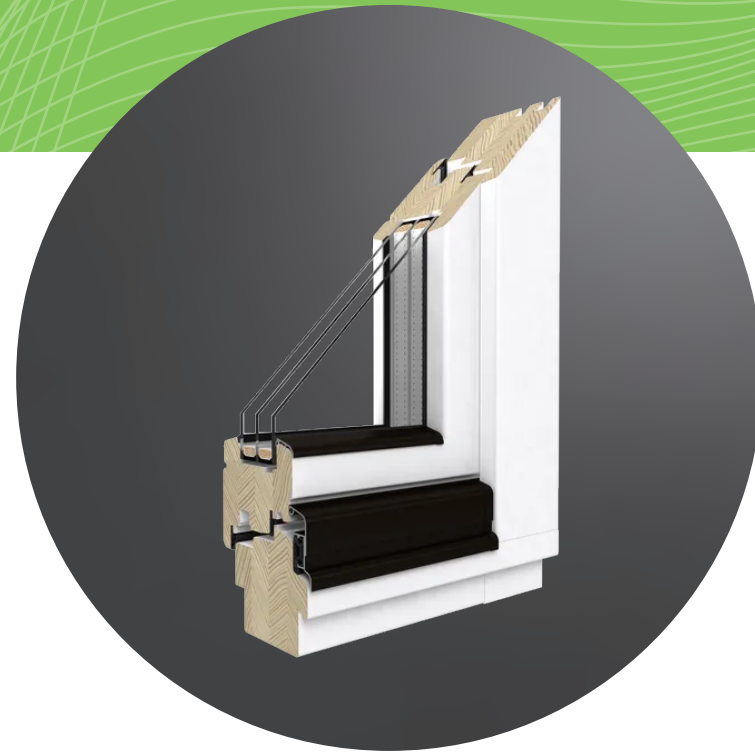


# Soft Line Wood

Windows made in Softline system made from wood pine and meranti. Wood systems with a depth of 68 mm, 78 mm and 88 mm. The woodwork is made of made of solid wood glued in layers and dried to the appropriate humidity.

- 2" glazing pocket
- Protective aluminium board
- Three installation depths: 68mm, 78mm, 88mm



12+ opaque paint colors and non standard colors form RAL palette

- Dark Oak
- Dark Pine
- Pine Teak
- Meranti Teak
- Dark Walnut
- White Softline
- Mahogany
- Meranti Mahogany
- Bright Oak
- Meranti Bright Oak
- Walnut

and many more...